

Cruise Destination Bornholm ShoreEx



On Bornholm everything is close.

Exciting experiences you can offer your guest while on Bornholm. Contact us for more opportunities or get in touch directly with the tour operator for a tailored experience.

Small Batch Bornholm



Learn about the ingredients, the brewing process, the fermentation and some of the secrets behind a good and balanced beer, and taste the difference.

Duration: 45 – 90 minutes

Group size: 8 – 30

Options: Extra time for tasting

Location: 400 m from cruise pier

Website: www.smallbatch.dk

Sea Fortress Christiansø



Unique cultural and marine heritage. Founded in 1684, the fortress walls, towers and stone huts stand almost as when the fortress was left in 1856.

Duration: 4 hrs. incl. transfer

Group size: 7 – 25

Options: Can be arranged

Location: 30 min. from cruise pier

Website: www.christiansoe.dk

Medieval center



Travel back to Bornholm's exciting medieval history. Our guides in medieval clothing will show you an authentic medieval rural town.

Duration: 30 minutes – 3 hrs

Group size: 15 – 60

Options: Tasting, canon firing

Location: 25 min. from cruise pier

Website: www.bornholmsmiddelaldercenter.dk

Hammershus



Absolute highlight. Largest castle ruin in northern Europe from 1300 A.D. Spectacular view to Sweden (weather permitting). New visitor center and guides in historical clothing.

Duration: 30 minutes – 3 hrs.

Group size: 15 – 60

Options: Special events, tasting

Location: 30 minutes from cruise pier

Website: www.bornholmsmiddelaldercenter.dk

Østerlars round church



A castle and a church in one - these are the unique Medieval round churches of Bornholm you will see the largest and most impressive of them.

Duration: 15 minutes – 1 hr.

Group size: 8 – 30

Options: Tour of the loft (no extra fee)

Location: 25 min. from cruise pier

Website: www.bornholmsmiddelaldercenter.dk

Høstet – Buck thorn farm



HØSTET means harvested. Organic sea buckthorn orchard. Hear the story about the origin of this berry and why this family decided to move their life from Copenhagen to Bornholm.

Duration: 1 hr. 15 minutes

Group size: 15 – 60

Options: Cocktail alcoholic or non-alc.

Location: 35 min. from cruise pier

Website: www.hoestet.dk

Museum of Military History



The military history of Bornholm is ancient, and in this unique museum, there's a chance to see and touch history. Many objects from the wars fought over Bornholm, and various occupations, as well as Bornholms engagements in current conflicts around the world.

Duration: 45 – 90 minutes

Group size: -

Options:

Location: 15 min. from cruise pier

Website: www.formus.dk

Cold War Museum and Tower



NATO's most eastern listening post is now an interesting museum about the cold war, but also about WWI and WW2. See and hear how intelligence was conducted in the cold war and get a view of Bornholm from 70m above.

Duration: 1 - 2 hrs.

Group size: -

Options: -

Location: 30 minutes from cruise pier

Website:

<http://www.bornholmertaarnet.dk/>

Bornholm Art Museum



Everything art related to Bornholm in one place. The building itself is a piece of art. Craft, sculptures and paintings created through decades with the light and soul of Bornholm as inspiration.

Duration: 30 – 90 minutes

Group size: -

Options: guided walk to Helligdomsklipperne, lunch or tasting in the café.

Location: Pick up at cruise pier

Website:

www.bornholms-kunstmuseum.dk

Bornholm Cultural Museum



Tours with highly skilled guides. Visit rock carvings from 1.400 b.c. and hear the stories they tell. Get a tour of one or more of six castles. Walk in the footsteps of a local boy experiencing WW2 bomb-ings on his way to school.

Duration: 45 – 90 minutes

Group size: 80 per hour

Options: Tours are tailored to your group

Location: 25 min. from cruise pier

Website: www.bornholmsmuseum.dk

Gaarden - Food Culture



Think school kitchen for grown-ups. Nordic cooking, hiking for wild herbs, master chef class, common meals with fellow travellers. Workshops include Icecream, smoking of foods, traditional Bornholm foods and more.

Duration: 4 hrs.

Group size: 10 - 100

Options: Tour of the historic farm

Location: 25 min. from cruise pier

Website: www.gaarden.nu

Pernille Bülow Glass Design



Authentic edge and artistic nerve characterize this glass blower with 30 years of experience. Watch the process of blowing glass in the workshop. Scandinavian design with an international touch.

Duration: 45 – 90 minutes.

Group size: -

Options: Artist talk by Pernille Bülow

Location: 35 min. from the cruise pier

Website: www.pernillebulow.dk

Bornholm bicycle tour



A scenic ride with a local guide. Partly along the old railroad track and on forest paths. See the town of Rønne, Nyker Round Church, Hasle smoke house with smoked herring and an ice-cold beer, before returning to the ship.

Duration: 4 hrs. (25 km)

Group size: -

Options: -

Location: Pick up at the cruise pier

Website: www.bgg.dk

Rønne Walking Tour



A walking tour with a local guide eager to share the secrets and charms of the town. Explore the development of this 700 y.o. town, its culture and sometimes violent history.

Duration: 2 hrs.

Group size: -

Options: Ending in town or by the ship

Location: Pick up at cruise pier

Website: www.bgg.dk

Horse and Carriage Tour



A wonderful tour through one of Denmark's largest wooded areas, at the centre of the island. Pass by the highest point on Bornholm. From the lookout tower there is an excellent view of almost the whole island.

Duration: 3 hrs. incl. bus transfer

Group size: 12 - 48

Options: Lunch at Ekkodalshuset

Location: Pick up at cruise pier

Website: www.bgg.dk

Tree Top Climbing



Obstacle and challenge courses in the trees up to 18 m above ground. Zipwires up to 250m. 7 courses, difficulty levels (kids, easy, medium, hard).

Duration: 45 – 90 minutes

Group size: 80 per hour

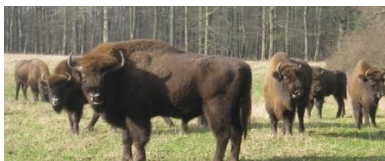
Options: Snacks, icecream, drinks

Location: 25 min. from cruise pier

Website:

<https://bornholmklatrebane.dk/>

NaturBornholm



NaturBornholm is an attraction with focus on the nature of Bornholm. Here you find a time travel, dinosaurs, Baltic Sea aquarium, and more.

The guides can also meet you in the nature for bison safaris, fossil hunting or bird watching.

Duration: 1 - 4 hrs.

Group size: -

Options: Guided tour in nature

Location: 20 min. from cruise pier

Website:

<http://www.naturbornholm.dk/>

Arts and Crafts - Bornholm



Grønbechs Gård is the epicenter of Arts and Craft on Bornholm. Get a guided tour of the current and permanent exhibitions. Go behind the scenes with the local guide and learn about Makers Island and why Bornholm is a designated World Craft Region.

Duration: 1 – 3 hrs.

Group size: 10 - 12

Options: Childrens program

Location: 15 min. from cruise pier

<https://groenbechsgaard.dk/en/about/the-history/>

M/S Thor coastal boat tour



Guided boat trip with the 106 year old (wooden) passenger boat M/S Thor. From Gudhjem along the historic (cliff) coast to the Sanctuary Cliffs. The boat will berth at the cliffs with an option to walk back or visit Bornholm Art Museum.

Duration: 1 hr. (total round trip)

Group size: 50 – 60

Options: Visit to Bornholm Art Museum

Location: 30 minutes from cruise pier

Website: www.ms-thor.dk

Coastal Yacht tour



A coastal cruise on board a 46-foot flybridge yacht. Guiding about Bornholm and the coastal scenery. Sunset tours, lunch-cruises or in-harbour privat party.

Duration: 2.5 – 6 hours

Group size: 12

Options: Transfer in private bus from the cruise pier. On board local tapas and sparkling wine or local beers.

Location: 30 minutes from cruise pier

Website: www.balticyacht.dk

Food and Energy



On this guided tour, you will explore how Bornholm is harnessing sustainable energy from various sources and visit some of the most successful small and medium sized food producers. A tour for the mind and body.

Duration: 4 hrs.

Group size: Minimum 6 pers.

Options: -

Location: Pick up at cruise pier

Website: www.gaarden.nu

Svaneke Brew House



Visit at Bornholms first microbrewery, with beer tasting of four different beers, and a good talk about how to make good organic beer with 100% local ingredients.

Duration: 45 minutes

Group size: Minimum 15

Options: Add tour of the brewery

Location: 30 min. from the cruise pier

Website: www.svanekebryghus.dk

Slusegaard – A Royal twist



Follow in the footsteps of a young student of archeology, queen Margrethe II. Learn how a Christmas tree can be preserved on a bottle and taste it! Immerse yourself in history and geography as you are guided around this exciting area.

Duration: 1-2 hrs.

Group size: 10 - 20

Options: Ask for options

Location: 30 min. from the cruise pier

Website: www.cafe-slusegaard.dk

Garden tour



Guided tour with local guide, including visit to Kræmmerhuset garden, craft art and ceramics. Gudhjem with a visit to the garden of the Oluf Høst Museum, and stop at a private garden in Vestermarie.

Duration: 45 – 90 minutes

Group size: 8 – 30

Options: Extra time for tasting

Location: 400 m from cruise pier

Website: www.bgg.dk

Traditional Smokehouse



Visit one of Bornholms oldest smokehouses in Hasle. Get a tour and try the smoked herring, and maybe a cold beer, and visit the museum right next door.

Duration: 45 minutes

Group size: Minimum 15

Options: -

Location: 20 min. from the cruise pier

Website: www.hasleroegeeri.dk

Arts and Craft Walk in Rønne



Guided art walk in Rønne with stops at local artist's workshops. Each stop includes a personal introduction to the process and vision of each artist, as well as a beverage.

Duration: 3 hrs.

Group size: 8 - 12

Options: Add more visits

Location: Pick up at the cruise pier

Website: www.miem.dk

Working Farm Museum



Historic farm that can be dated back to the year 1600. Today a working farm as it was in the 1800th century. Complete with animals, staff in costumes and a giftshop with all the delicacies that Bornholm has to offer.

Duration: 45 – 90 minutes

Group size: 8 – 30

Options: Visit the food culture house

Location: 25 min. from the cruise pier

Website: www.gaarden.nu

The Torvehal Food Market



In the old butcher house, a new indoor food market has emerged. Find all the local foods and much more. The Torvehal also houses a coffee roaster and Bornholms first gin distillery.

Duration: 30 -60

Group size: 5 -15

Options: Tour of the gin distillery, snacks, drinks

Location: 10 min. from the cruise pier

Website: www.torvehalbornholm.dk

Baltic Seaglass



World renowned for their unique glass pieces inspired by nature, Baltic Sea Glass is a must visit for lovers of beautiful glassware for daily use or for the collector.

Duration: 30 – 60 minutes

Group size: 8 – 16

Options: -

Location: 30 minutes from the cruise pier

Website: www.balticseaglass.com

Bente Hammer Printed Silk



Since 1972 Bente Hammer has designed and hand printed silk and other fine fabrics to create beautiful pieces of clothing and other textiles. A visit behind the scenes.

Duration: 45 – 90 minutes

Group size: 8 – 20

Options: Tour of private home and Nylars Round Church.

Location: 15 min. from the cruise pier

Website: www.bentehammer.dk

Hjort Ceramic Factory



Hjorts Factory is a 150 year old ceramic factory and a museum, but also a working ceramics factory using ancient methods and materials to create modern table ware and art pieces. Guided tour of production, museum and the gift shop

Duration: 45 minutes

Group size: Minimum 15

Options: Add tour of the brewery

Location: 10 min. from the cruise pier

Website: www.bornholmstmuseum.dk

Coastal Kayaking



From beginners to accomplished kayakers, the rocky coastline with caves or fine sandy beaches around Bornholm, attract people to this unique experience. Get a guided tour in kayak for either beginners or trained kayakers.

Duration: 3 hrs.

Group size: 4 - 8

Options: -

Location: 30 min. from the cruise pier

Website: www.eastwind.dk

Mountainbiking



Beginners on MTB's are taken well care of by experienced coaches. For the accomplished mountainbikers, Bornholms offers some very challenging terrain taking full advantage of the rocky landscape.

Duration: 3 hrs.

Group size: 4 - 8

Options: -

Location: 10 min. from the cruise pier

Website: www.bornholmsoutdoorcenter.dk